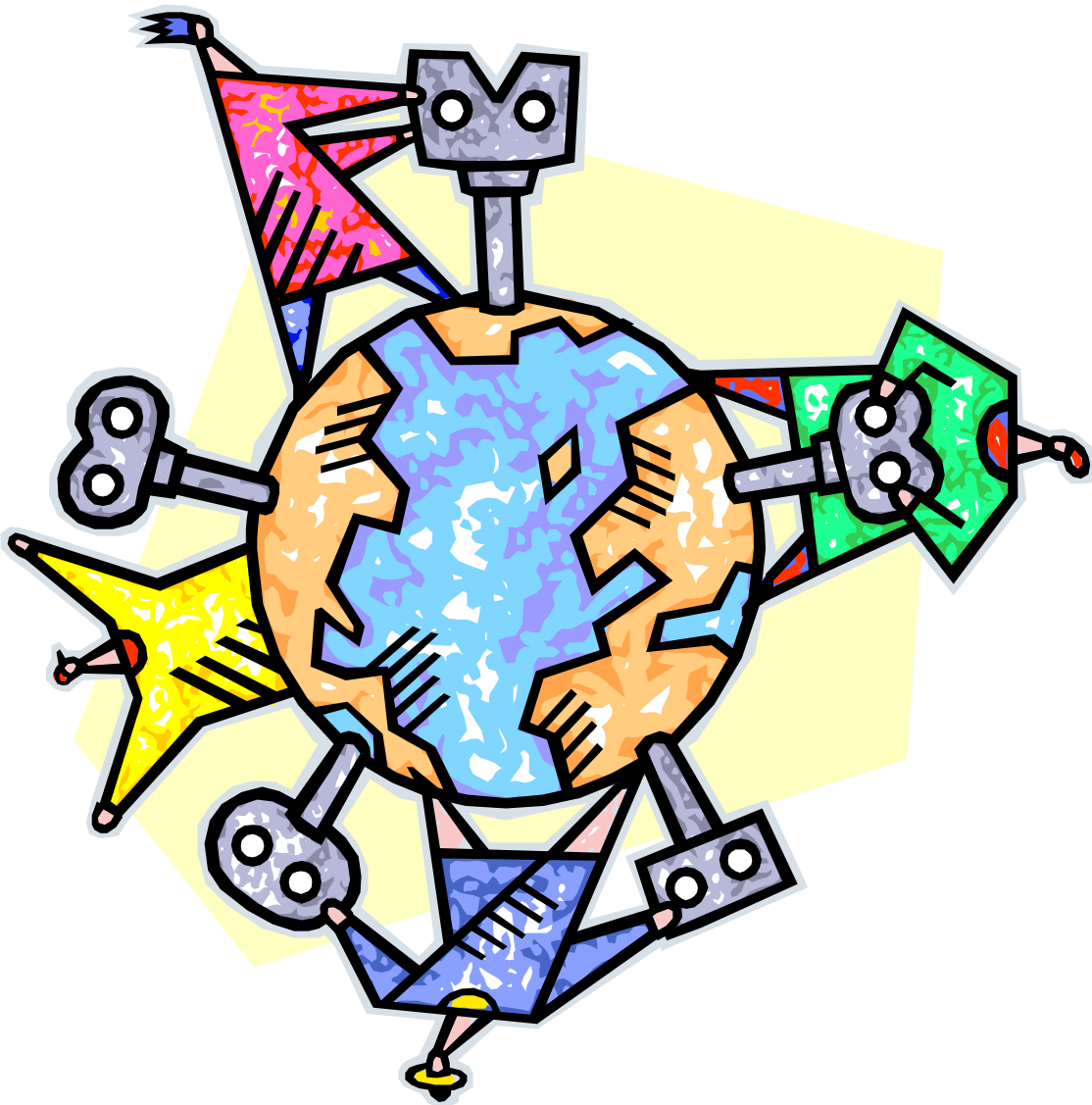


# National Engineers Month Volunteer Instructions

## Server Routing Activity



## IBM Tried-And-True Classroom Activity

### SERVER ROUTING!

This activity teaches students about how an email or instant message gets routed between two computers and they are the messages and routers.

Suggested presentation timings (40 minute class)

Suggested presentation timings (50 minute class)

Presentation Pointers

Connecting with your Host Educator

[http://www.businesseducationlinks.org/pdxhome/nem/connecting\\_with\\_educator.pdf](http://www.businesseducationlinks.org/pdxhome/nem/connecting_with_educator.pdf)

Tips by grade level

[http://www.businesseducationlinks.org/pdxhome/nem/tips\\_by\\_grade\\_level.pdf](http://www.businesseducationlinks.org/pdxhome/nem/tips_by_grade_level.pdf)

Best Practice Tips

[http://www.businesseducationlinks.org/pdxhome/nem/best\\_practices.pdf](http://www.businesseducationlinks.org/pdxhome/nem/best_practices.pdf)

Activity Provided Courtesy of IBM:

Long-time leader and advocate for National Engineers Month

For More Information Contact:

**Linda Wilson Bauer**

IBM Corporate Citizenship/Affairs and Communications for Oregon

[liwilson@us.ibm.com](mailto:liwilson@us.ibm.com)

(503) 578-3749

T/L 775-3749

(503) 543-8918 Home Office

(503) 578-3749 fax

15300 SW Koll Pkwy

Beaverton OR 97006

### Suggested presentation timings (40 minute class)

Start time:	End time:	Time spent (elapsed time)	Activity
		5 mins (5)	Class arrives and settles. I ntroductions (slide 1)
		5 mins (10)	What is an engineer? How do people become engineers? (slides 2-7)
		5 mins (15)	I ntroduction to the activity (slide 8)
		10 mins (20)	Go over instructions, hand out materials and do the first run of the activity (slides 9-11)
		10 mins (30)	Get feedback on the first run then do the second run. (slides 12-14)
		5 mins (35)	Discuss Networks and the I nternet (slides 15-16)
		5 mins (40)	Review final slides (17-18). Hand out give-aways, if time, or leave with the teacher.

### Suggested presentation timings (50 minute class)

Start time:	End time:	Time spent (elapsed time)	Activity
		5 mins (5)	Class arrives and settles. Introductions (slide 1)
		10 mins (15)	What is an engineer? How do people become engineers? (slides 2-7)
		5 mins (20)	Introduction to the activity (slide 8)
		10 mins (30)	Go over instructions, hand out materials and do the first run of the activity (slides 9-11)
		10 mins (40)	Get feedback on the first run then do the second run. (slides 12-14)
		5 mins (45)	Discuss Networks and the Internet (slides 14-15)
		5 mins (50)	Review final slides (17-18). Hand out give-aways, if time, or leave with the teacher.

## Presentation Pointers

It's much more important to make contact with your audience than to slavishly follow the presentation and speakers notes.

- Ask questions to involve your audience.
- Make eye contact.
- Use the slides and speakers notes as a guide. You don't need to read every word or explain every point.

When you ask questions, you'll probably need to wait longer than you expect for answers.

Don't encourage distractions:

- It's good to allow questions during the presentation but request that students put their hands up to ask or answer questions.
- If the students are not paying attention, ask them to listen and then wait for their attention. If you try to present over the noise you'll probably hurt your voice.
- Give activity instructions before you hand out the materials.

If appropriate, give personal examples of why you work in engineering.

**Have fun!!**