

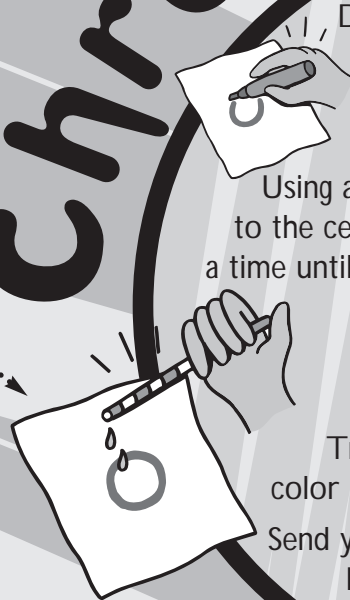


Chromatography

What You Need

- white paper towels
- washable color markers
- water
- a straw
- a cup

Make Drops with a Straw
Place a straw in a cup of water. Put your thumb over the top of the straw. Then lift the straw out of the water. The straw holds the water, and you can let it go one drop at a time by lifting your thumb.



1
Draw a circle on a sheet of white paper towel using a washable color marker.

2
Using a straw, add drops of water to the center of the circle. Add one drop at a time until the water spreads outside the circle.

3
What happens?

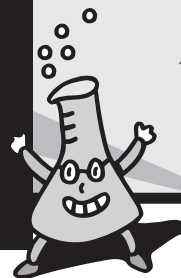
4
Try it again using different color markers. How do they compare?
Send your results and ideas to ZOOM,
Box 350, Boston, MA 02134
or pbskids.org/zoom.



What happens if you use a different brand of marker or a different kind of paper, like a coffee filter? How about if you use a different liquid, like cooking oil instead of water? Change one thing (that's the variable). Then make a prediction and test it out.

Science Scoop

The water separates the colors in the ink. As water moves through the paper towel, it leaves behind the individual colors that had been mixed together in the marker.



Sent in by Hilary R. of Plainsboro, NJ